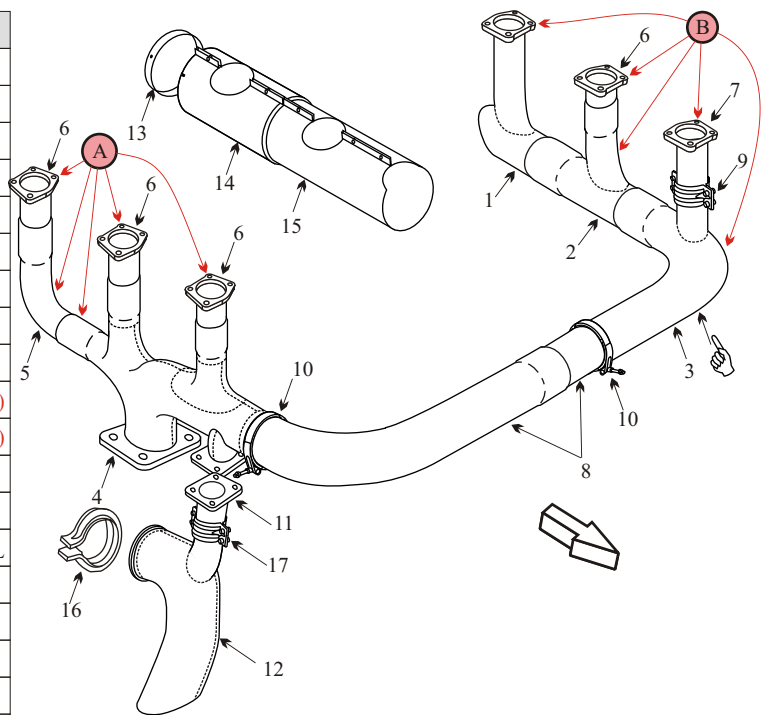


CESSNA P210 SN P21000001-21000834

Item	Part Number	Description
1	2154000-50	RISER LEFT REAR INCONEL
2	2154000-47	RISER LEFT CTR INCONEL
3	2154000-43	RISER LEFT FRONT INCONEL
3	2154023-1	RISER LEFT FRONT INCONEL
4	2154000-55	COLLECTOR RIGHT HAND INCONEL
5	2154000-64	ELBOW INCONEL
6	2154002-3	RISER INCONEL
7	1250860-117	RISER INCONEL
8	2154000-68	CROSSOVER INCONEL
A	2154000-54	EXHAUST STACK RIGHT HAND (Inconel)
B	2154000-53	EXHAUST STACK LEFT HAND (Inconel)
1	2154000-7	RISER LEFT REAR STAINLESS STEEL
2	2154000-5	RISER LEFT CTR STAINLESS STEEL
3	2154000-16	RISER LEFT FRONT STAINLESS STEEL
4	2154000-36	COLLECTOR RH STAINLESS STEEL
5	2154000-10	ELBOW STAINLESS STEEL
6	2154002-1	RISER STAINLESS STEEL
7	1250860-100	RISER STAINLESS STEEL
8	2154000-27	CROSSOVER STAINLESS STEEL
A	2154000-2	EXHAUST STACK RIGHT HAND (321 SS)
B	2154000-4	EXHAUST STACK LEFT HAND (321 SS)
9	1555014-1	CLAMP HALF ASSY (2 Required)
10	24540-250	CROSSOVER CLAMP (2 Required)
11	2154001-7	TAILPIPE ADAPTER
12	2154015-6	TAILPIPE
13	2154005-1	CAP ASSY
14	2154007-4	MUFF ASSY FWD
15	2154014-6	MUFF ASSY AFT
16	NH1000897-50	CLAMP TAILPIPE
17	1250860-28	CLAMP BY PASS (2 Required)
-	1550148-1	GASKET TURBO BY PASS (2 Required)
-	628260	GASKET (6 Required)
-	2150049-1	INDUCTION AIR BOX SN P21000001 0475
-	2150049-2	INDUCTION AIR BOX SN P21000476 0760
-	2150133-1	INDUCTION AIR BOX SN P21000761 0874
-	VARIOUS	SEAT BASE



Some of the parts for this aircraft are Inconel. Although Inconel is a far superior metal, it is more difficult to inspect. Inconel tends to corrode from the inside without showing signs of flaking or bulging like stainless steel. The carbon on the inside of the exhaust parts should be removed to properly inspect the components. If the welds are developing pinholes the component may not pass an internal inspection.

- Inspect joints for freedom of movement and distortion.
- Inspect tailpipe for thinning and internal corrosion.
- Inspect the transition or plenum for blisters or cracks.
- ☞ This part has a hot area at the elbow, inspect this area for black flaking metal and or bulges.

Cessna P210N
AD 83-23-03 R2
Applies to S/N's P21000001 thru P21000811
Inspect exhaust system for cracks.
Inspection required for each 50 hrs of operation.
AD does not apply when Inconel exhaust system installed.
SE83-1 is mandatory when replacing the exhaust.

SE79-52 Cracking Collector(SN 1-223) If your collector has cracked in the past replace your RH Aft elbow with a new 2154000-10 Elbow

SE79-52 Cracking LH FWD Stack(SN 1-385). If you have cracking in the LH FWD segment order a new part 2154000-43, 1250860-117, and 2154000-27

SE81-21 Non Fitting Parts(SN 1-539) Factory installed exhaust systems may not be interchangeable with replacement parts. Replacing individual segments is not recommended as they will fail prematurely.

SE83-1 Replacement of Exhaust(SN 1-811) AD 81-23-03 is exempted with the installation of Inconel Exhaust. SE83-1 is mandatory when replacing the exhaust.

SNL94-1 Inconel Exhaust Care(All SN) If any part of the exhaust needs to be removed the exhaust must be removed as an assembly 2154000-53/54. The crossover must also be removed, dismantled, cleaned and re-lubricated or breakage will occur.