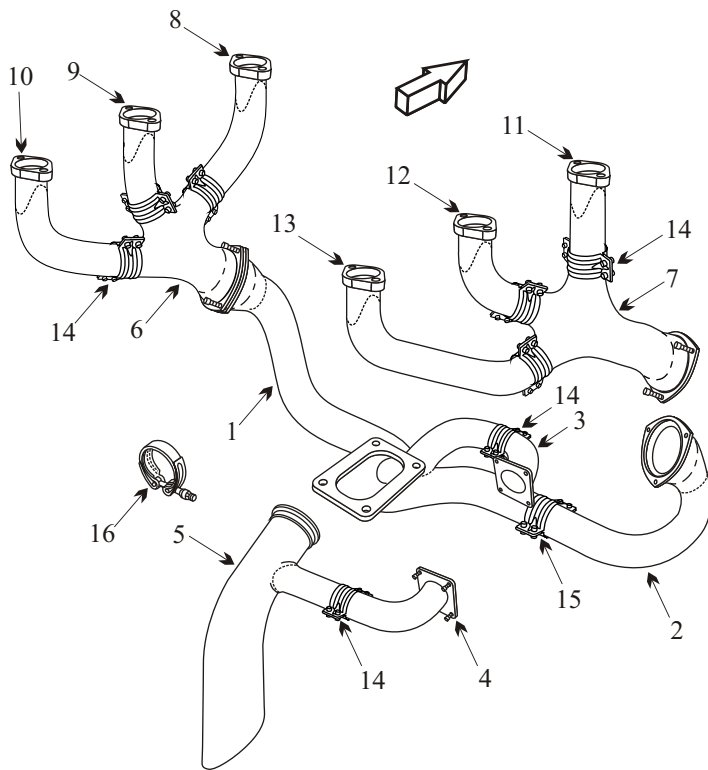


CESSNA T337 SKYMASTER SN 0569-01815

CESSNA T337P SKYMASTER SN P3370001-0225

REAR ENGINE

Item	Part Number	Description	
1	1555006-27	TURBO TRANSITION	
2	1555006-23	EXHAUST PIPE RIGHT HAND	
3	1555006-6	BYPASS ELBOW FWD	
4	1555007-11	BYPASS ELBOW AFT	
5	1555007-7	TAILPIPE	SN ⁰⁵⁶⁹ ₀₁₈₁₅
6	1555011-9	COLLECTOR LEFT HAND	
7	1555011-10	COLLECTOR RIGHT HAND	
8	1455014-27	RISER LEFT HAND FRONT	
9	1455014-26	RISER LEFT HAND CENTER	
10	1455014-25	RISER LEFT HAND REAR	
11	1455014-17	RISER RIGHT HAND FRONT	
12	1455014-18	RISER RIGHT HAND CENTER	
13	1455014-19	RISER RIGHT HAND REAR	
14	1250860-29	CLAMP HALF	
15	1555006-24	CLAMP HALF	
16	NH1000897-40	CLAMP TAILPIPE	
NS	970	GASKET	
NS	020-250	SPRING KIT	
NS	J-9613-31	SHOCK MOUNT	
NS	1550105-1	DUCT FILTER ATTACH	SN ⁰⁵⁶⁹ ₀₁₈₁₅
NS	1550105-18	INDUCTION AIR BOX	SN ⁰⁵⁶⁹ ₀₁₈₁₅
NS	1551100-23	ENGINE MOUNT	SN ¹¹⁹⁴ ₁₄₆₂
NS	1551100-38	ENGINE MOUNT	SN ¹⁴⁶³ ₁₄₉₀
NS	1551100-39	ENGINE MOUNT	SN ^{P3370001} ₀₁₄₈
NS	1551100-40	ENGINE MOUNT	SN ¹⁴⁹¹ ₁₅₅₀
NS	1551100-41	ENGINE MOUNT	SN ^{P3370149 to 0225} _{P3371472 to 1815}
NS	1551100-42	ENGINE MOUNT	SN ¹⁵⁵¹ ₁₆₇₁
NS	1555009-22	TURBO SUPPORT BRACKET	
NS	1555009-19	TURBO SUPPORT LEFT HAND	
NS	1555009-20	TURBO SUPPORT RIGHT HAND	
NS	1555009-7	TURBO SUPPORT FWD	
NS	1555009-4	TURBO SUPPORT AFT	
NS	1550148-2	GASKET WASTEGATE	
NS	632884	GASKET TURBO INLET	



- Inspect under clamps for corrosion, poor fit or cracks.
- Inspect tailpipe for thinning and internal corrosion.
- The riser stacks flare into the collector making them difficult to remove.
- If the aircraft has remained in outdoor storage without fuel in the tanks, check the inside of the tanks for corrosion at the low points. If corrosion is found in one tank, the other tanks may be in the same condition.

SN T3370569 AND ON

Item	Part Number	Description	Item	Part Number	Description
17	1426005-23	FUEL TANK INBOARD LEFT HAND	21	1426005-24	FUEL TANK INBOARD RIGHT HAND
18	1426003-37	FUEL TANK LEFT HAND MID MAIN	22	1426003-38	FUEL TANK MID MAIN RIGHT HAND
19	1426003-27	FUEL TANK OUTBOARD MAIN LEFT HAND	23	1426003-28	FUEL TANK OUTBOARD MAIN RIGHT HAND
20	1426014-7	SUMP TANK ASSY LEFT HAND	24	1426014-8	SUMP TANK ASSY RIGHT HAND

