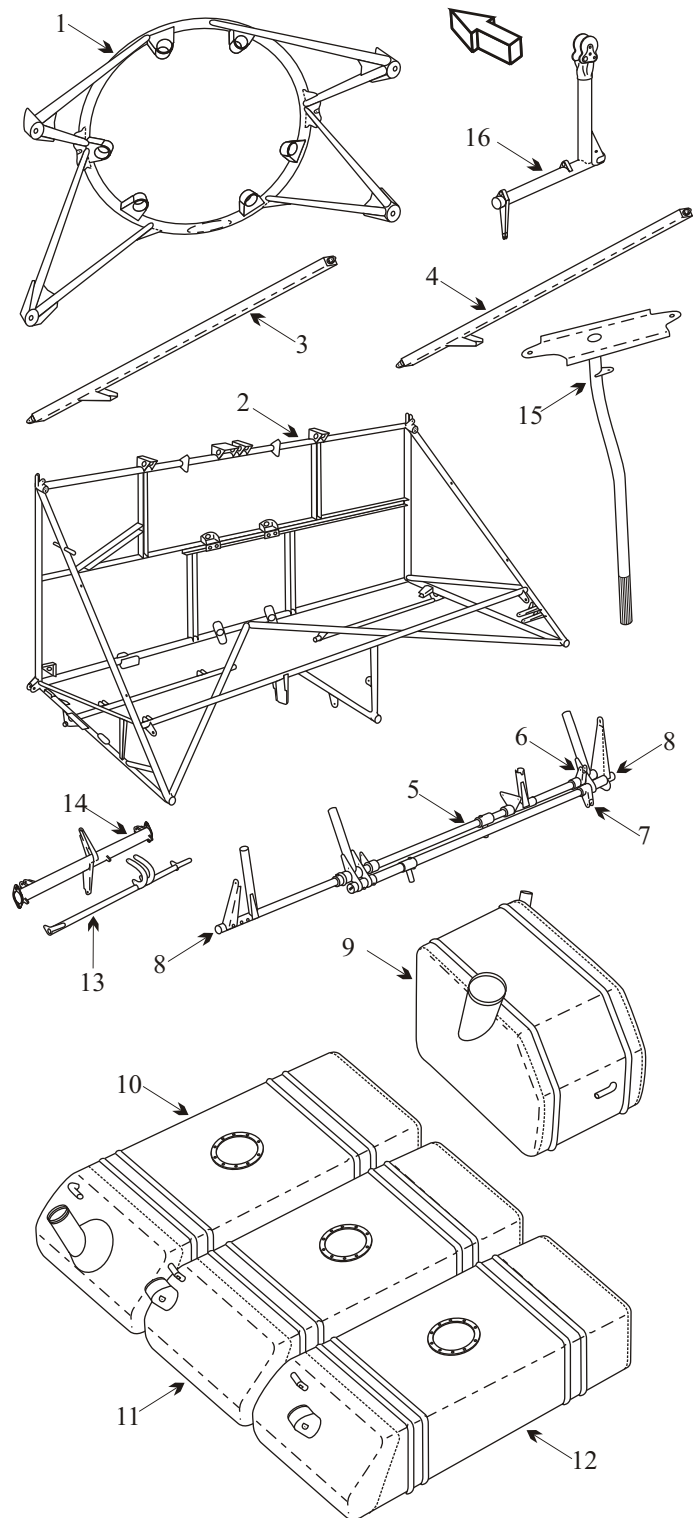


DE HAVILLAND DHC-2 BEAVER WITH 985 P & W ENGINE

Item	Part Number	Description
1	C2EM181-A	ENGINE MOUNT
NS	C2EM4A	ENGINE MOUNT
2	C2FS3203A	FRAME FUSELAGE
NS	C2FS1503A	FRAME FUSELAGE
3	C2FS3281A	STRUT FWD FUSELAGE LEFT HAND
3	302811-11	STRUT FWD FUSELAGE LEFT HAND STC
4	C2FS3282A	STRUT FWD FUSELAGE RIGHT HAND
4	302811-12	STRUT FWD FUSELAGE RIGHT HAND STC
NS	C2CF1807	BEARING TORQUE TUBE
NS	C2CF1809	WASHER TORQUE TUBE
NS	C2CF1965A	RUDDER BAR ASSY PRE 1175
5	C2CF2049A	RUDDER BAR ASSY POST 1175
6	C2CF1969	LEVER TORQUE TUBE RUDDER BAR
7	C2CF1971	LEVER TORQUE TUBE RUBBER BAR
8	C2CF213	PLUG END TUBE RUDDER BAR
NS	C2CF281A	BEARING RUDDER BAR PIVOT
NS	C2E1063A	FLANGE ASSY AIR BOX
NS	C2E1091	WHEEL ROLLER AIR BOX
NS	C2E1161A	LEVER ASSY AIR BOX
NS	C2E169AND	DUCT MAG COOLING
NS	C2E181AND	DUCT MAG COOLING
NS	C2E187AND	DUCT MEG COOLING
NS	C2E1903A	INDUCTION ASSY UPPER
NS	C2E1909	INDUCTION INTAKE AIR
NS	C2E1911	INDUCTION DUCT ASSY
NS	C2E1959	INDUCTION DUCT ASSY
NS	C2E1969	INDUCTION FLANGE ADAPTER
NS	C2E2039	INDUCTION SPRING
NS	C2E2269	INDUCTION SPRING
NS	C2E2439A	SPRING DOOR CLOSING AIR BOX
NS	C2E55A	FLANGE ASSY AIR BOX
NS	C2E731A	FLANGE ASSY AIR BOX
NS	C2E979	BACKFIRE DOOR CARB HEAT
NS	C2EC659A	SUPPORT BRACKET ASSY COWL MOUNT
NS	C2EC693A	SUPPORT BRACKET ASSY COWL MOUNT
NS	C2FS3582ND	STEP ASSY
9	C2LT321A	OIL RESERVOIR
9	C2LT7A	OIL RESERVOIR
9	C2LT95A	OIL RESERVOIR
NS	C2PT141A	FUEL TANK LONG RANGE
10	C2PT1A	FUEL TANK FWD PRE 1376
11	C2PT2A	FUEL TANK CTR PRE 1376
12	C2PT3A	FUEL TANK AFT PRE 1376
NS	C2PT445A	FUEL TANK WING TIP LEFT HAND
NS	C2PT446A	FUEL TANK WING TIP RIGHT HAND
NS	C2PT431A	FUEL TANK FWD POST 1376
NS	C2PT433A	FUEL TANK CTR POST 1376
NS	C2PT435A	FUEL TANK AFT POST 1376
13	C2T29A	TUBE ELEVATOR TRIM
14	C2T7A	TUBE ELEVATOR TORQUE
15	C2UT473	TUBE ASSY TORQUE
16	C2CF851A	CONTROL COLUMN



AD 84-09-06

Applies to all S/N's.

Inspect the lower control column sub-assembly for cracks.

Inspection required every 200 hrs of operation.

AD 2002-14-28

Applies to all S/N's.

Replace front fuselage struts, then after 15 yrs inspect every 12 months visual and every 5 yrs. ultrasonically.

Repetitive inspects relieved with strut replacement every 15 yrs.