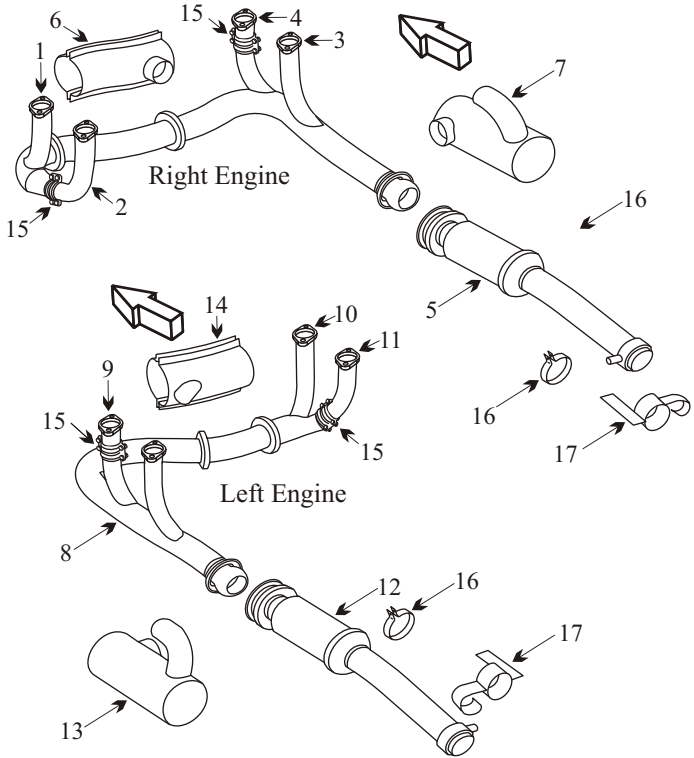


PIPER PA-34-200 SENECA

WITH LYCOMING IO/LIO 360 ENGINE

Item	Part Number	Description
1	78463-013	COLLECTOR RIGHT ENGINE INBOARD
2	78463-012	RISER RIGHT ENGINE INBOARD
3	78463-015	COLLECTOR RIGHT ENGINE OUTBOARD
4	78463-016	RISER RIGHT ENGINE OUTBOARD
5	78463-018	TAILPIPE RIGHT ENGINE
6	78463-014	SHROUD RIGHT ENGINE
7	78463-017	TAILPIPE SHROUD RIGHT ENGINE
8	78463-006	COLLECTOR LEFT ENGINE OUTBOARD
9	78463-007	RISER LEFT ENGINE OUTBOARD
10	78463-004	COLLECTOR LEFT ENGINE INBOARD
11	78463-002	RISER LEFT ENGINE INBOARD
12	78463-010	TAILPIPE LEFT ENGINE
13	78463-009	TAILPIPE SHROUD LEFT ENGINE
14	78463-005	SHROUD LEFT ENGINE
15	78463-003	RISER CLAMP
16	78463-008	TAILPIPE CLAMP
17	78463-011	TAILPIPE HANGER
17	487-696	TAILPIPE HANGER
-	970	GASKET
-	96773-002	INDUCTION AIR BOX LEFT HAND
-	96773-003	INDUCTION AIR BOX RIGHT HAND
-	37032-004	INDUCTION AIR BOX ASSY SN ³⁴⁻⁴⁷⁰⁰⁰¹ ₇₀₂₉
-	37032-003	INDUCTION AIR BOX COVER SN ³⁴⁻⁴⁷⁰⁰⁰¹ ₇₀₂₉
-	95551-000	MOUNT ASSY NOSE GEAR SN ³⁴⁻⁷²⁵⁰⁰⁰¹ ₇₃₅₀₁₃₅
-	95551-022	MOUNT ASSY NOSE GEAR SN ³⁴⁻⁷³⁵⁰¹³⁶ ₇₃₅₀₃₆₃
-	95551-023	MOUNT ASSY NOSE GEAR SN ³⁴⁻⁷⁴⁵⁰⁰⁰¹ _{and on}
-	96366-000	ENGINE MOUNT
-	J9613-40	SHOCK MOUNT
-	VARIOUS	SEAT BASE
-	95723-000	TRUNNION NOSE GEAR SN ³⁴⁻⁷²⁵⁰⁰⁰¹ ₇₃₅₀₃₆₃
-	95723-005	TRUNNION NOSE GEAR SN ³⁴⁻⁷⁴⁵⁰⁰⁰¹ _{and on}



AD 72-17-01

Applies to S/N's 34-E4 and 347250001 thru 34-7350074

Remove and inspect induction air box assembly from each engine for excessive wear, check for cracks where the shaft mates to the valve assembly.

Inspection required every 100 hrs of operation.

If Piper kit # 760-722V is installed, recurring inspections are not required.

AD 73-14-02

Applies to S/N's 34-E4 and 34-7250001 old style twin tail pipe only, and up equipped with Piper exhaust P/N 96465-00 and 96466-00.

Inspect exhaust system for cracks, failed ducts or flanges. Inspection required every 25 hrs of operation.

AD 83-14-05

Applies to S/N's 34-7350343 thru 34-7450220, 34-7250001 thru 34-7350342 with exhaust systems installed as per Piper Service Letter 673.

Upon 1050 hrs of operation, drill 1/2" hole in center of baffle cone and inspect baffle for cracks or buckles with Boroscope.

Inspection required every 100 hrs after initial 1050 hrs of operation till new part installed.

● Inspect tailpipes for internal pitting and wall thickness especially at the outside radius, which is the thin section, and at support bracket.

● Inspect joints for freedom of movement and distortion.

● This part has a hot area at the elbow. Inspect this area for black flaking metal and bulges.

☞ This muffler requires flame cones which are still attached to be serviceable.