



# Exhaust Systems Engine Mounts Carb Air Boxes

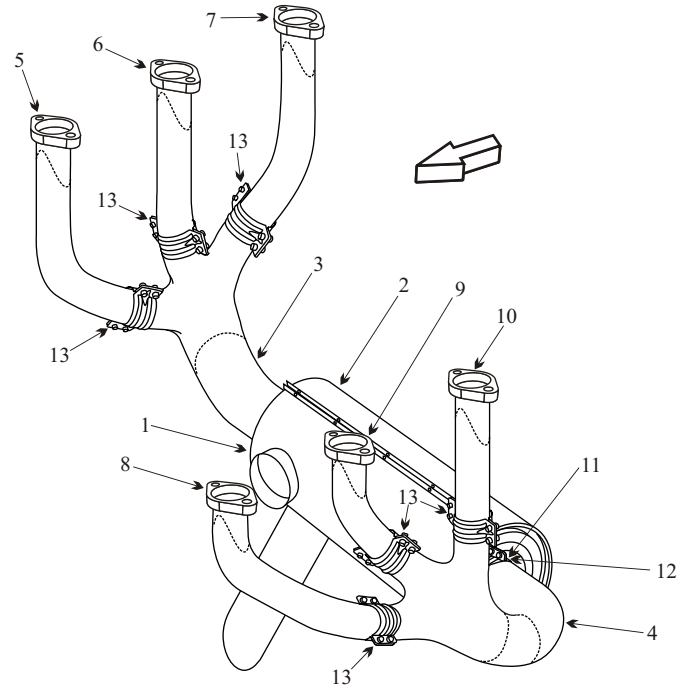
Shrouds • Seats • Piston • Turbine • Radial • Vintage • And More...



## CESSNA 172 XP

SN R1720001-3454  
FR 1720001-675

Item	Part Number	Description
1	1455009-3	MUFFLER
2	1455009-2	SHROUD
3	1455014-31	COLLECTOR RIGHT HAND
4	1455014-16	COLLECTOR LEFT HAND
5	1455014-25	RISER CYLINDER #5
6	1455014-26	RISER CYLINDER #3
7	1455014-27	RISER CYLINDER #1
8	1455014-19	RISER CYLINDER #6
9	1455014-18	RISER CYLINDER #4
10	1455014-17	RISER CYLINDER #2
11	0750161-24	CLAMP WITH PIN 2 5/8"
12	0750161-22	CLAMP NO PIN 2 5/8"
13	0750161-25	CLAMP HALF
NS	970	GASKET
NS	1457208-6	INDUCTION AIR BOX
NS	0551016-27	ENGINE MOUNT
NS	J-9613-42	SHOCK MOUNT
NS	0526000-43	FUEL TANK LEFT HAND
NS	0526000-44	FUEL TANK RIGHT HAND
NS	0514123-19	SEAT BOTTOM PILOT
NS	0514123-20	SEAT BOTTOM CO-PILOT



- The muffler must have inner flame tubes still attached to be serviceable.
- Inspect muffler for wear areas from the shroud flow divider.

(toll free) 1-888-388-8803 1-780-447-5955 Fax: 1-780-447-5980  
[sales@acornwelding.com](mailto:sales@acornwelding.com) [parts@acornwelding.com](mailto:parts@acornwelding.com) [www.acornwelding.com](http://www.acornwelding.com)