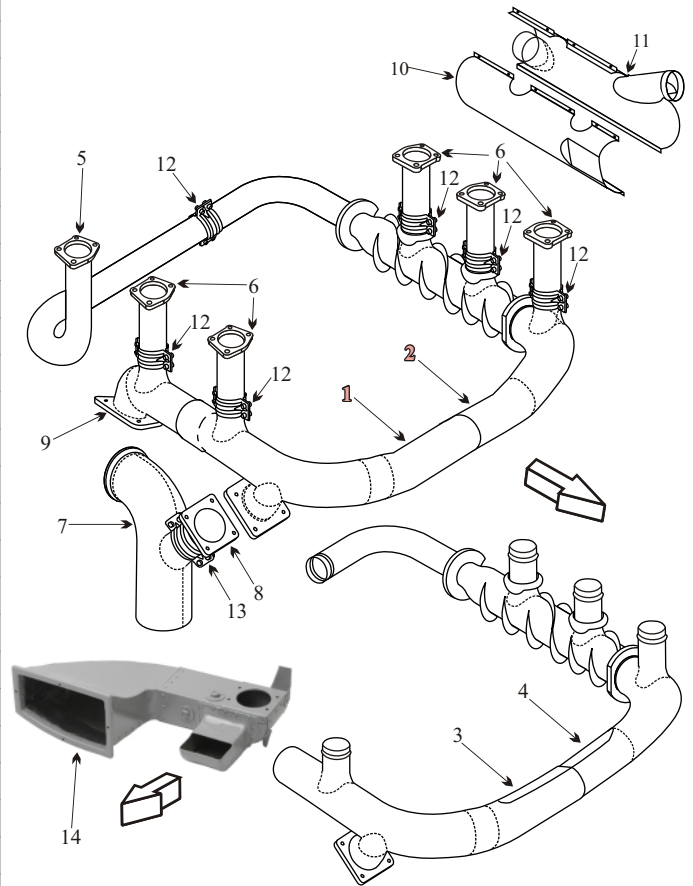


CESSNA T206/T207/T210/P206

Item	Part Number	Description	Code
1	1250860-104	EXHAUST RIGHT FRONT RND END	B
2	1250860-203	EXHAUST LEFT SIDE RND END	B
3	1250860-72	EXHAUST RIGHT FRONT SQ END	A
4	1250860-201	EXHAUST LEFT SIDE SQ END	A
5	1250860-90	CROSSOVER RISER	
6	1250860-100	RISER	
7	1250860-110	TAILPIPE	B
7	1250860-109	TAILPIPE	A
8	1250860-78	TAILPIPE ADAPTER	
9	1250860-105	TURBO INLET	
10	1250860-150	SHROUD INBOARD	
11	1250860-151	SHROUD OUTBOARD	
1	1250860-156	EXHAUST RIGHT FRONT	INCONEL
2	1250860-157	EXHAUST LEFT SIDE	INCONEL
5	1250860-121	CROSSOVER RISER	INCONEL
6	1250860-117	RISER	INCONEL
7	1250860-164	TAILPIPE	INCONEL B
7	1250860-163	TAILPIPE	INCONEL A
8	1250860-168	TAILPIPE ADAPTER	INCONEL
9	1250860-122	TURBO INLET	INCONEL
12	1250860-29	CLAMP HALF	
13	1250860-28	TAILPIPE ADAPTER CLAMP HALF	
-	628260	GASKET	
14	1250700-5	INDUCTION BOX ASSY	C
-	1250830-10	INDUCTION AIR BOX	D
-	1250700-7	INDUCTION AIR BOX	E
-	1250839-1	INDUCTION BOX ASSY AFT	F
-	1250830-37	INDUCTION BOX DUCT CTR	G
-	1250830-5	INDUCTION BOX DUCT FRT	H
-	1250830-29	INDUCTION BOX DUCT FRT	I
-	1250830-48	INDUCTION BOX DUCT FRT	J
-	1250735-1	INDUCTION BOX AFT	K
-	1250734-1	INDUCTION BOX CTR	L
-	1250830-42	INDUCTION BOX FRT	M
-	VARIOUS	SEAT BASE	



Usable on Codes

- A: SN U20600487 to 02199, SN 207-00001 to 00788
SN 210-00001 to 59199, P206-0161 to P206-0647
- B: SN U20602200 to U20607020, SN 210-59200 to 64897
- C: SN U2060276 to 0914, SN P2060001 to 0419
- D: SN P2060420 to 0647
- E: SN 20700001 and on, SN U2060438 to 2199
SN TP2060161 to 0647, SN T21000001 to 64136
- F: SN 210-00001 to 64897, SN 207 00001 to 00788
- G: SN 210-00001 to 64897, SN U20602200 to 07020
- H: SN 210-00001 to 60089, SN 20700001 to 00788
SN TP206161 to 0647
- I: SN 21060090 to 64135, SN U20602200 to 07020
- J: SN 21063700 to 64535 with air conditioning
- K: SN 210-64136 and on, SN 21064136-64535
with air conditioning
- L: SN 210-64136 and on, SN 21064136-64535
with air conditioning
- M: SN 210-64136 and on, SN 21064136-64535
with air conditioning

Cessna P206

AD 85-10-02

Applies S/N's P206-0001 thru P20600647 with Continental IO-520 engines.

Inspect engine induction air box outboard duct for cracks. Inspection required for each 100 hrs of operation till repaired or replaced.

Cessna TP206

AD 71-09-07 R1

Applies to all S/N's

Pressure test exhaust manifold in heat exchanger area, replace if leaks are found.

Inspection required for each 50 hrs of operation.

Cessna P210N

AD 83-23-03 R2

Applies to S/N's P21000001 thru P21000811

Inspect exhaust system for cracks.

Inspection required for each 50 hrs of operation.

AD does not apply when Inconel exhaust system installed.

- Inspect outlet stack for chaffing from the shroud.
- Inspect muffler for blisters or bulges under heat shroud.
- Inspect joints for freedom of movement and distortion.