



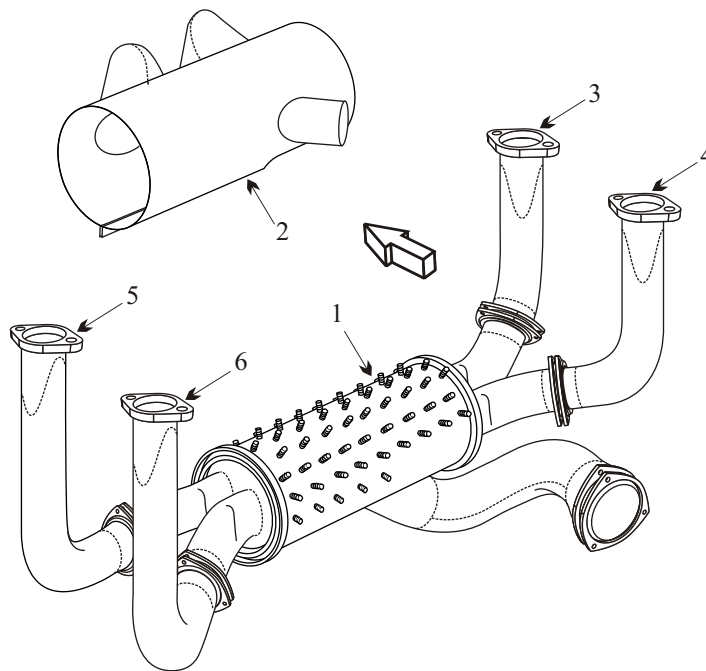
Exhaust Systems Engine Mounts Carb Air Boxes

Shrouds • Seats • Piston • Turbine • Radial • Vintage • And More...



MOONEY M-20C MARK 21 SN 1940-3466
MOONEY M-20D MASTER SN 101-251
WITH LYCOMING O360 ENGINE

Item	Part Number	Description
1	850-49	MUFFLER, BALL & STUD
2	637-139	SHROUD
3	637-12	STACK RIGHT FRONT CYL #1
4	637-11	STACK RIGHT REAR CYL #3
5	637-13	STACK LEFT FRONT CYL #2
6	637-14	STACK LEFT REAR CYL #4
-	637-35	TAILPIPE
-	77611	GASKET
-	011-254	SPRING KIT FOR STACKS
-	011-250	SPRING KIT FOR TAILPIPE
-	6235-11	CARB AIR BOX
-	590000	ENGINE MOUNT
-	J-7402-1	SHOCK MOUNT



- Inner flame tubes must be attached for the muffler to be serviceable.
- Inspect riser stacks for cracks at the flange reinforcement doublers, at the weld edges and the flange base. The inspection is more successful if the carbon residue is removed from inside the stack.

AD 75-09-08

Mooney M20C

Applies to S/N's 1852, 1940 thru 3466, 670001 thru 700091 and 20-0001 thru 20-1156.

Mooney M20D

Applies to S/N's 101 thru 260.

Inspect engine mount for cracks.

Inspections required every 100 hrs of operation till mount repaired or replaced as per Mooney SB M20-192A.

(toll free) 1-888-388-8803 1-780-447-5955 Fax: 1-780-447-5980
 sales@acornwelding.com parts@acornwelding.com www.acornwelding.com