



Exhaust Systems Engine Mounts Carb Air Boxes

Shrouds • Seats • Piston • Turbine • Radial • Vintage • And More...



CESSNA 210 EARLY MODEL

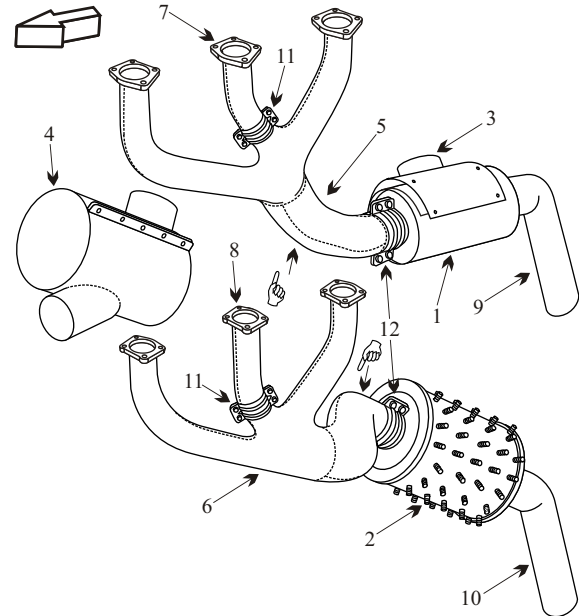
SN 57001-57840

Item	Part Number	Description	Code
1	1250201-17	MUFFLER RIGHT HAND	
2	1250200-3	MUFFLER HEAT EXCHANGER LH	
3	1250201-13	SHROUD RIGHT HAND	
4	1250200-2	SHROUD LEFT HAND	
5	1250201-6	COLLECTOR RIGHT HAND	
6	1250200-4	COLLECTOR LEFT HAND	
7	1250201-15	RISER RIGHT HAND CENTER	
8	1250200-7	RISER LEFT HAND CENTER	
9	1250201-7	TAILPIPE RIGHT HAND	
10	1250200-5	TAILPIPE LEFT HAND	
11	1250201-12	CLAMP HALF	
12	1250201-8	CLAMP	
-	1250201-14	CLAMP	
-	628260	GASKET	
-	1250300-1	INDUCTION AIR BOX	A
-	1250300-3	INDUCTION AIR BOX	B
-	1251000-1	ENGINE MOUNT	
-	J-6545-1	SHOCK MOUNT	
-	VARIOUS	SEAT BASE	

Usable on Codes

A: To 57001-57436, 57438, thru 57445, and 57447 and 57448

B: 57437, 57446, 57449-57840



Cessna 210

AD 85-10-02

Applies S/N's 21058221 thru 21064226 with Continental IO-520 engines.

Inspect engine induction air box outboard duct for cracks. Inspection required for each 100 hrs of operation till repaired or replaced.

☞ This part has a hot area at the elbow. Inspect this area for black flaking metal and bulges.

- Inspect muffler for blisters or bulges under heat shroud.
- Muffler requires baffles to be serviceable.

(toll free) 1-888-388-8803 1-780-447-5955 Fax: 1-780-447-5980
 sales@acornwelding.com parts@acornwelding.com www.acornwelding.com