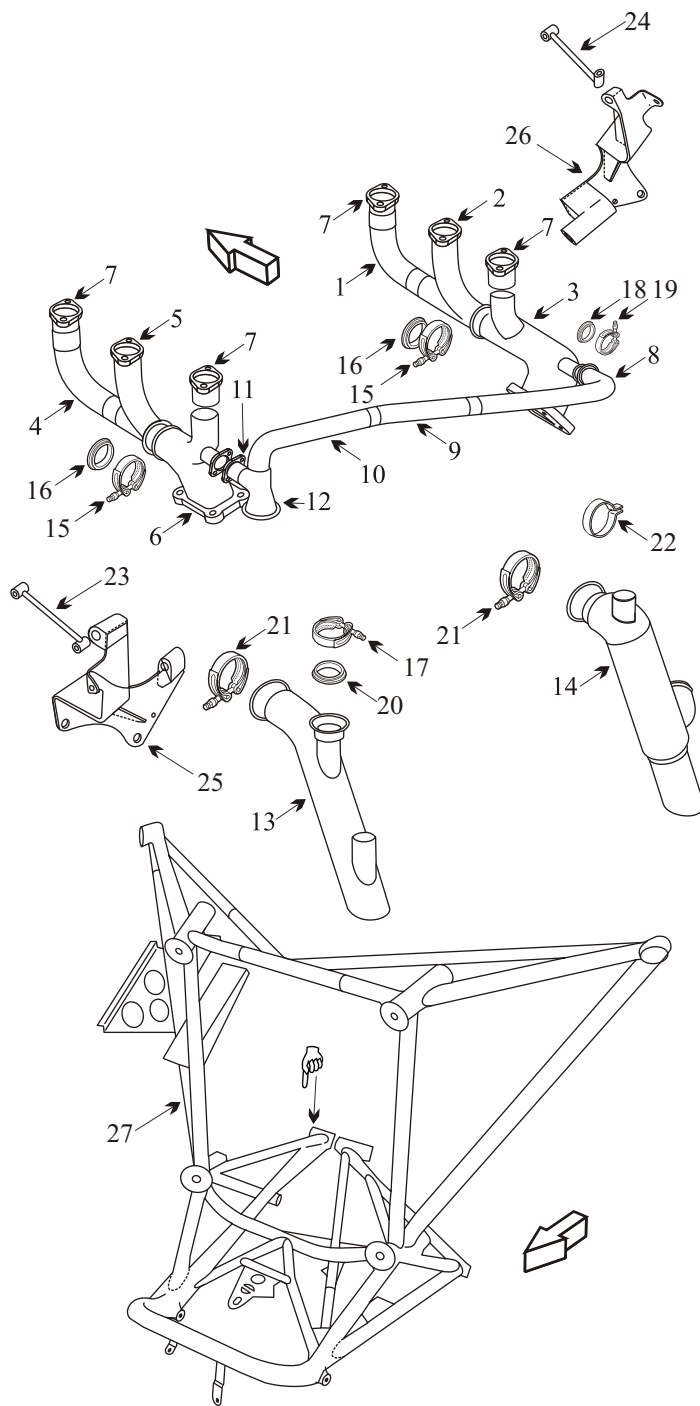


PIPER PA-46-350P MIRAGE

WITH LYCOMING TIO-540 AE2A ENGINE

Item	Part Number	Description
1	40B19844	RISER RIGHT HAND FRONT CYL #1
2	40B19827	RISER RIGHT HAND CENTER CYL #3
3	47C19845	TRANSITION RIGHT HAND
4	40B19841	RISER LEFT HAND FRONT CYL #2
5	40B19842	RISER LEFT HAND CENTER CYL #4
6	47C19847	TRANSITION LEFT HAND
7	40B19840	ADAPTER CYL #1, #2, #5, #6.
8	40B19975	CROSSOVER RIGHT
9	40B19974	CROSSOVER CENTER
10	40B19850	CROSSOVER LEFT
11	40B19851	TRANSITION ADAPTER
12	47C19848	EXHAUST TRANSITION LEFT HAND
13	40B21011	TAILPIPE LEFT HAND
14	40B22295	HEATER MUFFLER TAILPIPE RIGHT HAND
15	LW-12093-5	V-BAND SEGMENT TO HEADER
16	78084	GASKET
17	LW12093-6	V-BAND CLAMP TO BYPASS
18	06B19913	GASKET BYPASS TO RH HEADER
19	LW-12093-3	V-BAND CLAMP BYPASS TO RH HEADER
20	75845	GASKET BOTH SIDES OF WASTEGATE
21	LW-12093-8	V-BAND 2 3/4" TUBE
22	07C21135	CLAMP TAILPIPE 2 3/4"
23	07F19872	STRUT TURBO LEFT HAND
24	07F19871	STRUT TURBO RIGHT HAND
25	07A19870	BRACKET TURBO MOUNT LEFT
26	07A19846	BRACKET TURBO MOUNT RIGHT
NS	07A21137	BRACKET RIGHT TAILPIPE
NS	07A21136	BRACKET RIGHT TAILPIPE
NS	07F21138	LINK RIGHT TAILPIPE SUPPORT
NS	07A19981	BRACKET CROSSOVER PIPE SUPPORT
NS	40G19982	CLAMP 1 1/2" ID X 5/8" WIDE
NS	40G19901	LINK LEFT TAILPIPE SUPPORT
NS	77611	GASKET
NS	89721-034	INDUCTION AIR BOX
27	89137-02	ENGINE MOUNT RDC ENHANCED
27	89137-041	ENGINE MOUNT
NS	J-9613-55	SHOCK MOUNT
NS	VARIOUS	SEAT BASE
NS	78077	V-BAND FLANGE



SB #1103

Applies to S/N's 4622003 thru 4622200, S/N's 4636001 thru 4636317.

Inspect engine mount actuator attach feet area for cracks and replace mount if cracks found.

Inspection required every 100 hrs of operation till mount replaced.

Acorn Welding alternate means of compliance

RDC #C-RA04-243/D will also relieve repetitive inspections.

● Inspect transition header for cracks.

● Inspect joints for freedom of movement and distortion.

● Slip fit stacks should be ordered as a complete assembly to ensure good joint integrity with smooth slip fits.

☞ Acorn Welding alternate means of compliance

RDC #C-RA04-243/D will also relieve repetitive inspections.