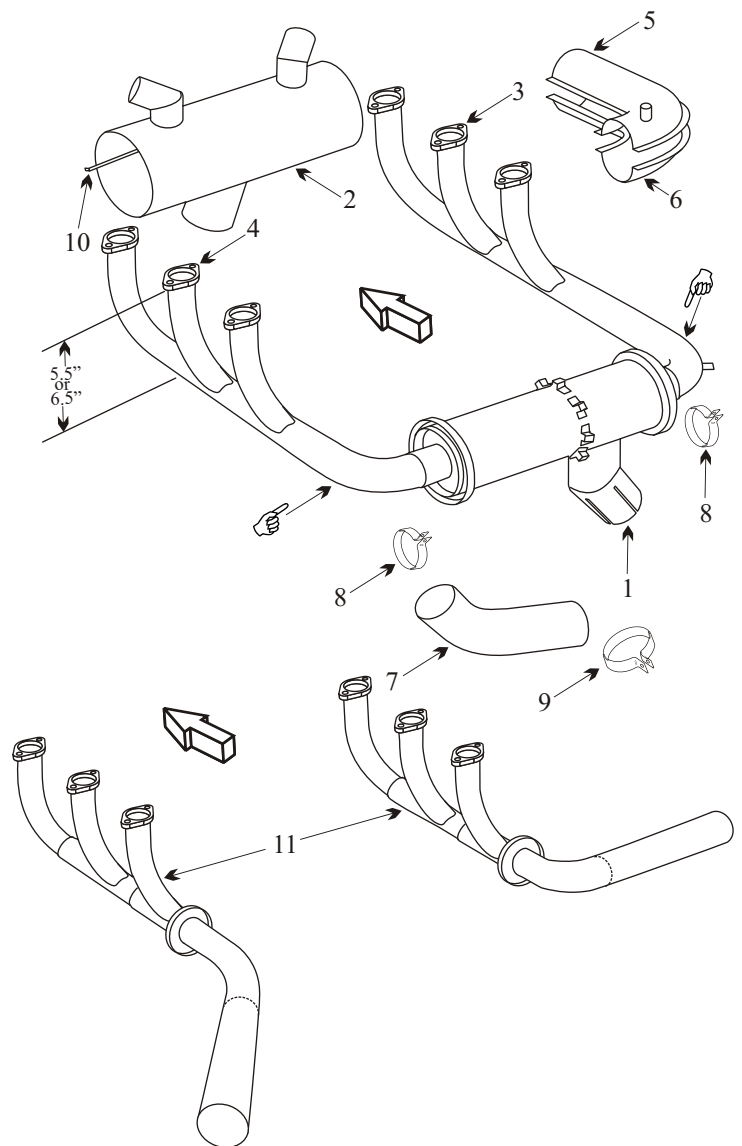


## PIPER PA-25-235/260 PAWNEE

Item	Part Number	Description	Code
1	753-753	MUFFLER	
2	64074-000	SHROUD SN 25-2000 25-2555	
2	64451-000	SHROUD SN 25-2556 25-4171	
2	64879-000	SHROUD SN 25-4172 and up	
3	60350-003	STACK D MODEL RH 6 1/2"	
3	64039-003	STACK RIGHT HAND 5 1/2"	
4	60350-002	STACK D MODEL LH 6 1/2"	
4	64039-002	STACK LEFT HAND 5 1/2"	
5	64167-007	CARB HEAT TOP SN 25-2000 25-2555	
5	64439-004	CARB HEAT TOP SN 25-2556 25-4171	
5	64439-008	CARB HEAT TOP SN 25-4172 25-5499	
5	64439-010	CARB HEAT TOP SN 25-5500 and on	
6	64167-003	CARB HEAT BOTTOM SN 25-2000 25-2555	
6	64439-005	CARB HEAT BOTTOM SN 25-2556 and on	
7	64170-000	TAILPIPE	
8	14235-008	CLAMP EXHAUST STACKS	
9	64092-000	CLAMP TAILPIPE	
10	64073-000	SHROUD CLIP	
-	77611	GASKET	
11	SA-4079NM	STRAIGHT PIPE STC	A
-	64040-000	CARB AIR BOX SN 25-2000 4171	
-	64862-000	CARB AIR BOX SN 4172 and on	
-	64030-000	ENGINE MOUNT	
-	J-3804-20	SHOCK MOUNT	
-	SA01154AT	WING ATTACH FITTINGS	B



### Usable On Codes

A: Acorn has capabilities to overhaul your STC system flange up like new to exhaust STC holders

B: Acorn can install STC reinforcements as an alternate means of compliance to AD 95-12-01

- The muffler must have inner flame tubes still attached to be serviceable.
- Inspect the Y-joint at the aft cylinder stack for cracks.
- Inspect muffler for blisters or bulges under heat shroud.
- Inspect tail pipes for internal pitting and wall thickness especially at the outside radius, which is the thin section, and at support bracket.
- D Model Aircraft have Wing Tip Tanks.

☞ This part has a hot area at the elbow. Inspect this area for black flaking metal and bulges.

### AD 67-14-07

Applies to S/N's 25-2000 thru 25-4171

Inspect exhaust system for cracks, burn-through, weld separations and failed baffles.  
Inspect lower engine mount in area near exhaust stack for burned paint and rust.  
Inspection required every 50 hrs of operation.

### AD 95-12-01

Applies to all S/N's.

Inspect wing forward spar fuselage attach cluster for damage.  
Dye penetrant and ultrasonic inspect the wing forward spar fuselage attach fitting assembly for corrosion and cracks.  
Inspection required every 24 months of operation.  
Cluster maybe replaced every 5 years as an alternative to the repetitive inspections.